

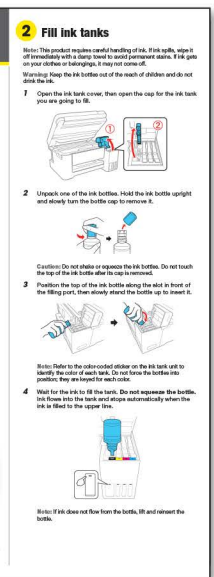


# In the box



\*The NPD Group, Inc., Total Channel Tracking Service, U.S. & Canada, Printers, Refillable ink tank included, based on units, August 2017 – July 2018. Supertank printers are defined as refillable ink tank printers.

## Expression® ET-2750 EcoTank® All-in-One Supertank Printer



### EcoTank 502 Ink bottles

*We recommend genuine  
Epson® Ink for the best print  
quality and performance.*

### Power cord

*(USB cable not included)*

### CD and documentation

SD card sold separately.



# At a glance



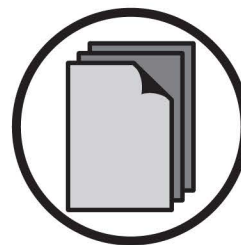
## Main features



Wireless



Print



Copy



Scan

## Additional features

- ✓ Up to 2 years of ink in the box<sup>1</sup>
- ✓ Print up to 6,500 pgs bk/5,200 clr<sup>2</sup>
- ✓ Equivalent to about 30 cartridge sets<sup>3</sup>
- ✓ Save up to 80% on ink with replacement bottles<sup>4</sup>
- ✓ Uniquely keyed auto-stop ink bottles
- ✓ Borderless 4" x 6" printing



ET-2750

## Ink bottles



### EcoTank 502 Ink Bottles

*We recommend genuine Epson® ink for the best print quality and performance.*

- <sup>1</sup> Based on average monthly document print volumes of about 150 pages.
- <sup>2</sup> Included ink bottle yields based on the ISO/IEC 24712 pattern with Epson's methodology. Actual ink yields will vary considerably. For more information, visit [www.epson.com/inkinfo](http://www.epson.com/inkinfo)
- <sup>3</sup> Equivalent cartridge sets estimate based on print yields of the included Black and color ink bottles as compared to Epson standard-capacity ink cartridge sets for similarly featured cartridge printers as of March 2017.
- <sup>4</sup> Savings comparison based on the purchase cost of replacement ink bottles and the cost of enough cartridges to achieve the total page yields of the bottles using the manufacturers' online prices and yields for the highest-capacity cartridges for the best-selling, similarly featured consumer inkjet printers priced at \$499 or less per NPD, July 2016. Actual savings will vary based on print tasks, print volumes and usage conditions.

Auto 2-sided  
printing

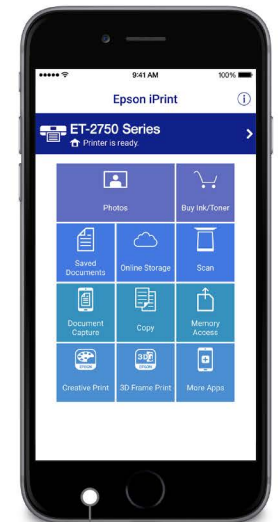
1.44" color  
display



Built-in  
memory  
card slot\*

Wireless printing

Integrated  
easy-to-fill  
ink tanks



Smartphone/  
tablet printing\*

\*SCROLL DOWN TO "FROM THE MANUFACTURER" TO LEARN MORE.



Uniquely keyed  
auto-stop ink  
bottles



# Expression® ET-2750 EcoTank® All-in-One

Wireless | Print | Copy | Scan



Supertank All-in-One

Everyday

## The wireless EcoTank all-in-one with Cartridge-Free Printing and auto 2-sided printing.

**Cartridge-free printing** — comes with up to 2 years of ink in the box<sup>1</sup>

**Includes enough ink to print up to 6,500 pages black/5,200 color<sup>2</sup>** — equivalent to about 30 ink cartridge sets<sup>3</sup>

**Save up to 80 percent on ink with low-cost replacement bottles<sup>4</sup>** — plus easy-to-fill, supersized ink tanks

**Easy wireless** — easily print from iPad®, iPhone®, Android™ tablets and smartphones<sup>5</sup>; includes Wi-Fi Direct®<sup>6</sup>

**Auto 2-sided printing** — save up to 50 percent of your paper supply

**1.44" color display** — easy setup and navigation

**Borderless photo printing** — built-in memory card slot<sup>7</sup> to easily print and share 4" x 6" photos, PC-free

**Exclusive auto-stop ink bottles** — uniquely keyed for easy filling of each color

**Unbeatable combination of value<sup>1</sup> and convenience** — the freedom to print anything you want in color, without worry

**Product protection you can count on** — 2-year limited warranty with registration<sup>8</sup>



Replacement ink bottles



\*The NPD Group, Inc., Total Channel Tracking Service, U.S. & Canada, Printers, Refillable ink tank included, based on units, January - March 2017. Supertank printers are defined as refillable ink tank printers.

*1 Based on average monthly print volumes of about 150 pages.*

## Print

**Printing Technology** 4-color (CMYK), drop-on-demand MicroPiezo® inkjet technology  
**Printer Language** Epson ESC/P®-R  
**Max. Print Resolution** 5760 x 1440 optimized dpi  
**Print Speed**† 10.5 ISO ppm (black), 5.0 ISO ppm (color)  
**Auto 2-sided Print**† 6 ISO ppm (black), 4 ISO ppm (color)  
**Min. Ink Droplet Size** 3 ink droplet sizes, as small as 3 picoliters

## Mobile Printing and Scanning

**Epson Connect™ Solutions**⁵ Epson iPrint™ App (iOS®, Android)  
**Other** Apple® AirPrint®, Google Cloud Print™, Android printing, Fire™ OS printing, Mopria® Print Service

## Copy

**Copy Speed**†† 7.7 ISO cpm (black), 3.8 ISO cpm (color)  
**Copy Modes** Color, Black/White, Draft/Normal  
**Copy Quantity** 1 – 20 copies (PC-free)  
**Max. Copy Size** 8.5" x 11" (PC-free)  
**Copy Features** Reduce and Enlarge (25 – 400%)

## Scan

**Scanner Type** Color flatbed (CIS line sensor)  
**Max. Hardware Resolution** 2400 dpi  
**Hardware Resolution** 1200 x 2400 dpi  
**Max. Resolution** 9600 dpi interpolated  
**Scanner Bit Depth** Input: 48-bit color / Output: 24-bit color  
**Scan Bed Size** 8.5" x 11.7" max.  
**Scan Features** Scan to Computer

## Connectivity

**Standard Connectivity** Hi-Speed USB  
 Wireless 802.11 b/g/n®  
 Wi-Fi Direct®  
**Memory Card Slots/Compatibility**⁷ SD/SDHC/SDXC, MiniSD, MiniSDHC, MicroSD, MicroSDHC, MicroSDXC  
**Operating Systems** Windows® 10, Windows 8, 8.1 (32-bit, 64-bit), Windows 7 (32-bit, 64-bit), Windows Server® 2003 – Windows Server 2016⁹ (32-bit, 64-bit)  
 Mac® OS X® 10.6 – macOS® 10.12.x¹⁰

## Paper Handling

**PC-free Paper Support** Plain (letter, 8.5" x 14", A4), Photo (4" x 6", 5" x 7", 8" x 10", letter, A4)  
**Max. Paper Size** 8.5" x 47.2"  
**Paper Sizes** 3.5" x 5", 4" x 6", 5" x 7", 8" x 10", 8.5" x 11", 8.5" x 14", A4, A6, half letter, legal, executive  
**Paper Types** Plain paper, Epson Bright White Paper, Photo Paper Glossy, Premium Photo Paper Glossy, Presentation Paper Matte, Premium Presentation Paper Matte and Premium Presentation Paper Matte Double-sided  
**Envelope Types** No. 10; plain paper, bond paper, air mail  
**Input Paper Capacity** Paper tray: 100 sheets plain paper, 20 sheets photo paper, 10 envelopes  
**Output Paper Capacity** 30 sheets plain paper

## General

**Display** 1.44" color LCD  
**Temperature**  
 Operating: 50 ° to 95 °F (10 ° to 35 °C)  
 Storage: -4 ° to 104 °F (-20 ° to 40 °C)  
**Relative Humidity**  
 Operating: 20 – 80%  
 Storage: 5 – 85% (no condensation)  
**Sound Level**  
 Power: 6.3 B(A)  
 Pressure: 50 dB(A)  
**Power Requirements**  
 Rated Voltage: AC 100 – 240 V Universal (Automatic)  
 Rated Frequency: 50 – 60 Hz  
 Rated Current: 0.4 – 0.2 A  
**Power Consumption** Approx. 13 W ISO 24712 (Standalone copy printing)  
 Approx. 0.3 W (Power Off Mode)  
**Safety Standards** UL60950-1-CAN/CSA-22.2 No. 60950  
 EMC FCC Part 15 subpart B class B,  
 CAN/CSA-CEI/IEC CISPR 22 class B  
**Weight and Dimensions (W x D x H)**  
 Printing: 14.8" x 22.0" x 10.5"  
 Storage: 14.8" x 13.7" x 9.4"  
 Weight: 13.2 lb  
**What's in the Box**  
 Expression ET-2750 EcoTank all-in-one, manual, CD-ROM for product setup, power cord, 1x bottle 502 Black (127 mL) and 1x bottle each 502 Cyan, Magenta, Yellow (70 mL)²  
**Software Included**¹¹ Epson printer drivers, Epson Scan 2  
**Warranty**⁸ 2-year limited warranty in the U.S. and Canada, 2nd year requires product registration  
**Country of Origin** Philippines

## Ink

**Ink Bottles** 4 individual ink bottles (Cyan, Magenta, Yellow and Black)  
**Replacement Ink Bottles**¹²  
 502 Black ink bottle (127 mL) yield: 7,500; 502 color (Cyan, Magenta, Yellow) ink bottle (70 mL) yield: 6,000  
 Epson strongly recommends the use of genuine ink to ensure optimal print quality and performance.

## Eco Features

ENERGY STAR® qualified  
 RoHS compliant  
 Recyclable product¹³  
 Epson America, Inc. is a SmartWay® Transport Partner¹⁴

## Ordering Information

Expression ET-2750 EcoTank C11CG22201

All images simulated.

† Black and color print speeds are measured in accordance with ISO/IEC 24734. Actual print times will vary based on system configuration, software, and page complexity. For more information, visit [www.epson.com/printspeed](http://www.epson.com/printspeed) | †† Black and color copy speeds are determined in accordance with ISO/IEC 29183. Actual copy times will vary based on system configuration and page complexity. For more information, visit [www.epson.com/copyspeed](http://www.epson.com/copyspeed) | 1 Based on average monthly print volumes of about 150 pages. | 2 Included ink bottle yields based on the ISO/IEC 24712 pattern with Epson's methodology. Actual ink yields will vary considerably for reasons including images printed, print settings, temperature and humidity. Yields may be lower when printing infrequently or predominantly with one ink color. All ink colors are used for printing and printer maintenance, and all colors must be available for printing. For more information, visit [www.epson.com/inkinfo](http://www.epson.com/inkinfo) | 3 Equivalent cartridge sets estimate based on print yields of the included Black and color ink bottles as compared to Epson standard-capacity ink cartridge sets for similarly featured cartridge printers as of March 2017. | 4 Savings comparison based on the purchase cost of replacement ink bottles and the cost of enough cartridges to achieve the total page yields of the bottles using the manufacturers' online prices and yields for the highest-capacity cartridges for the best-selling, similarly featured consumer inkjet printers priced at \$499 or less per NPD, July 2016. Actual savings will vary based on print tasks, print volumes and usage conditions. | 5 Most features require an Internet connection to the printer, as well as an Internet- and/or email-enabled device. For a list of Epson Connect enabled printers and compatible devices and apps, visit [www.epson.com/connect](http://www.epson.com/connect) | 6 Wi-Fi CERTIFIED™; level of performance subject to the range of the router being used. Wi-Fi Direct may require printer software. | 7 Adapter may be required. | 8 12 months of standard limited warranty or 50,000 plain paper sheets (whichever happens first). For an additional 12 months (total of 24 months or 50,000 plain paper sheets, whichever happens first), register your product and use Epson genuine ink bottles. See Limited Warranty for details. | 9 Only printing and scanning are supported under Windows Server OS. | 10 Some applications and/or functions may not be supported under Mac OS X. | 11 Internet access is required to install OS X drivers and software. | 12 Replacement ink bottle yields based on the ISO/IEC 24712 pattern with Epson's methodology. Actual ink yields will vary considerably for reasons including images printed, print settings, temperature and humidity. Yields may be lower when printing infrequently or predominantly with one ink color. All ink colors are used for printing and printer maintenance, and all colors must be available for printing. For more information, visit [www.epson.com/inkinfo](http://www.epson.com/inkinfo) | 13 For convenient and reasonable recycling options, visit [www.epson.com/recycle](http://www.epson.com/recycle) | 14 SmartWay is an innovative partnership of the U.S. Environmental Protection Agency that reduces greenhouse gases and other air pollutants and improves fuel efficiency.

**Better Products for a Better Future®**  
[eco.epson.com](http://eco.epson.com)

**Epson America, Inc.**  
 3840 Kilroy Airport Way, Long Beach, CA 90806



**Epson Canada Limited**  
 185 Renfrew Drive, Markham, Ontario L3R 6G3



**www.epson.com**  
**www.epson.ca**

Specifications and terms are subject to change without notice. EPSON, ECOTANK, Epson ESC/P, Expression and MicroPiezo are registered trademarks, EPSON Exceed Your Vision is a registered logomark and Better Products for a Better Future, Epson Connect and Epson iPrint are trademarks of Seiko Epson Corporation. AirPrint, Apple, iPad, iPhone, Mac, macOS and OS X are trademarks of Apple Inc., registered in the U.S. and other countries. Android and Google Cloud Print are trademarks of Google Inc. Windows and Windows Server are either registered trademarks or trademarks of Microsoft Corporation in the United States and/or other countries. Wi-Fi Direct® is a registered trademark and Wi-Fi CERTIFIED™ is a trademark of Wi-Fi Alliance®. SmartWay is a registered trademark of the U.S. Environmental Protection Agency. All other product and brand names are trademarks and/or registered trademarks of their respective companies. Epson disclaims any and all rights in these marks. Copyright 2017 Epson America, Inc. Com-SS-Oct-13 CPD-54081 7/17

Contact: